

Existing First Floor Plan
 Scale: 1/16" = 1'-0"

PROJECT PHASE

- PRELIMINARY
- DESIGN DEVELOPMENT
- CONTRACT DOCUMENTS
- OWNER'S APPROVAL
- PERMIT
- CONSTRUCTION

DESIGNED	
DRAWN	ESY
CHECKED	JMC

REVISIONS

NO.	DATE	DESCRIPTION

The Drawings prepared by the Architect for this Project are instruments of the Architect's service for use solely with respect to this Project and, the Architect shall be deemed the author of these documents and shall retain all common law, statutory, and other reserved rights, including the copyright.
 Copyright 2003

Wickliffe School Assessment
 Wickliffe, Ohio
 Ohio Schools Facilities Commission
 10 West Broad Street Suite 1400
 Columbus, Ohio 43215

Stacy &
 Asebrook,
 Ltd.

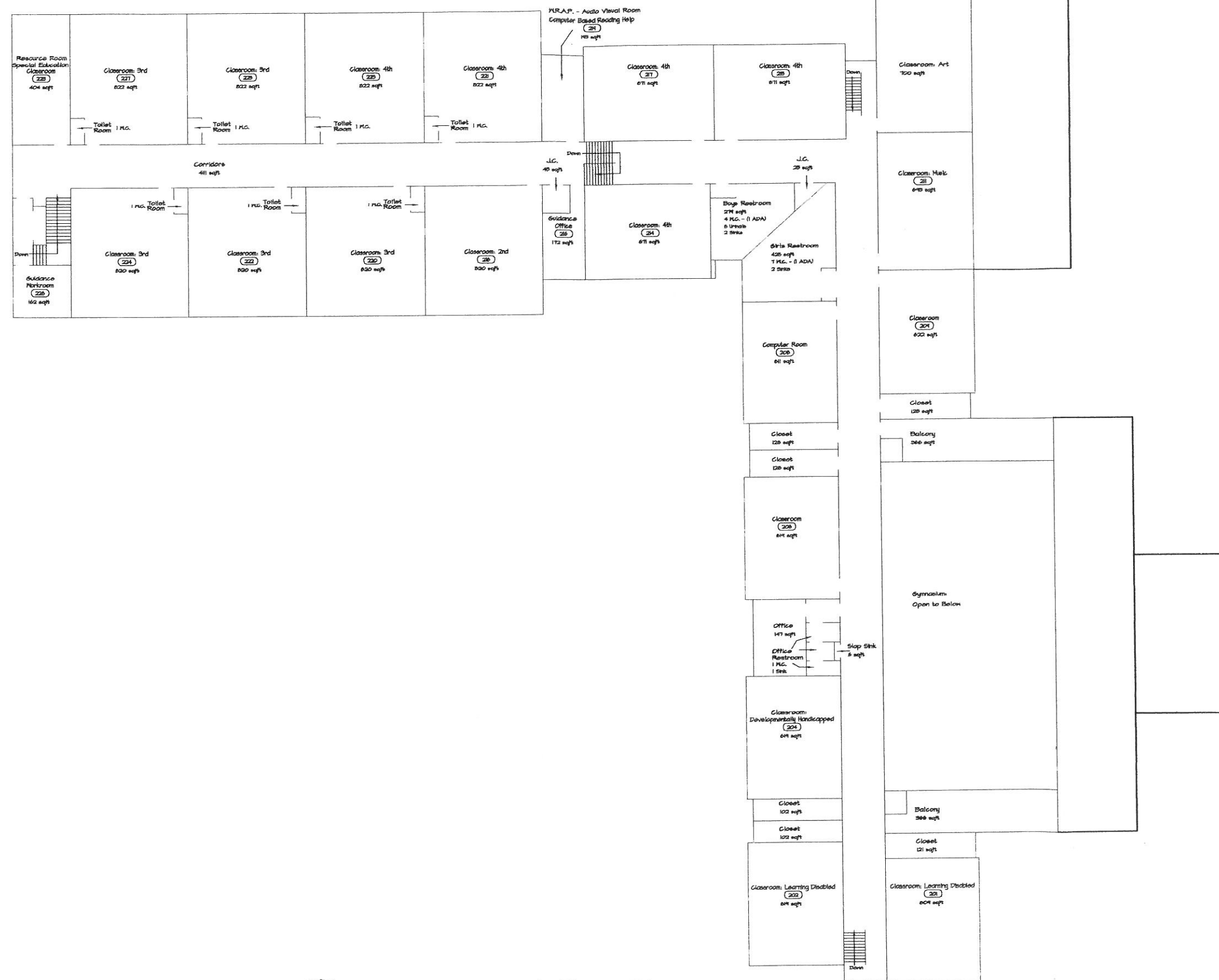
- o Architecture
- o Facility Management
- o Interiors

454 East Main Street
 Suite 236
 Columbus, Ohio
 43215-5380
 (614) 224-2300
 (614) 233-5812 Fax
 SAL@StacyandAsebrook.com
 www.StacyandAsebrook.com

Wickliffe Elementary
 School

Project No.	02039
Date	January 27, 2003

A 1.2



Existing Second Floor Plan
 Scale: 1/16" = 1'-0"

PROJECT PHASE

- PRELIMINARY
- DESIGN DEVELOPMENT
- CONTRACT DOCUMENTS
- OWNER'S APPROVAL
- PERMIT
- CONSTRUCTION

DESIGNED

DRAWN ESY

CHECKED JMC

REVISIONS

NO.	DATE	DESCRIPTION

The Drawings prepared by the Architect for this Project are instruments of the Architect's service for use solely with respect to this Project and, the Architect shall be deemed the author of these documents and shall retain all common law, statutory, and other reserved rights, including the copyright.

Copyright 2003

Wickliffe School Assessment
 Wickliffe, Ohio

Ohio Schools Facilities Commission
 10 West Broad Street Suite 1400
 Columbus, Ohio 43215

Stacy &
 Asebrook,
 Ltd.

- o Architecture
- o Facility Management
- o Interiors

454 East Main Street
 Suite 236
 Columbus, Ohio
 43215-5380

(614) 224-2300
 (614) 233-5812 Fax

SAL@StacyandAsebrook.com
 www.StacyandAsebrook.com

Wickliffe Elementary
 School

Project No. 02039
 Date January 27, 2003

A 1.3