

# **The Wickliffe City School District**

**Inspiring Students to Learn, Lead and Serve**

**Facilities Master Planning Presentation  
May 30, 2019**

# Facilities Master Planning Committee

- Comprised of community members, staff, and parents to develop a long-range Facilities Master Plan.
- Goal is to provide a safe and positive learning environment for both students and staff.
- Ensure facilities properly support our educational goals and investments are well managed and planned to support the success of our students and build the Wickliffe legacy for generations to come.

# Overview

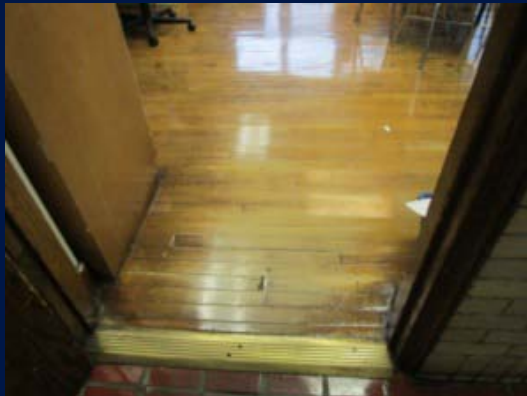
- 20+ Committee Members
- 12 Meetings Beginning in October 2018
- Review of Building Assessments and Validations
- Educational Design Solutions
- Enrollment Projections
- Financial Considerations
- Master Planning (Options, Sites, Costs)
- Locally Funded Initiatives



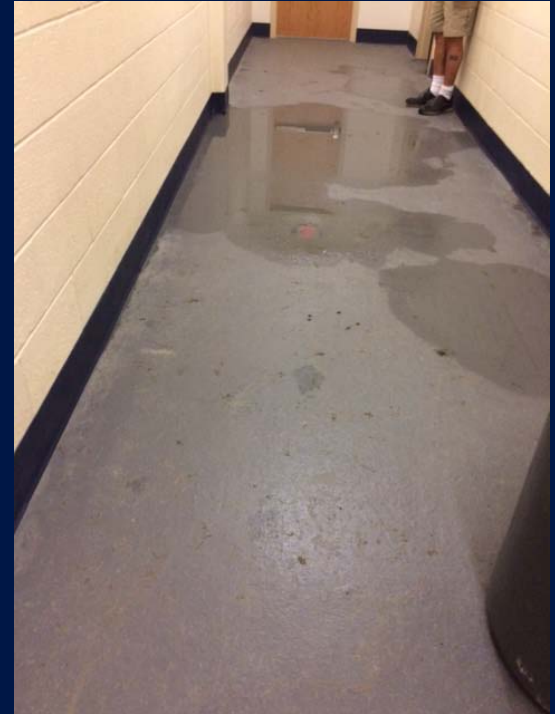
# Insights – Current Conditions



Wickliffe Elementary School -  
Windows Extensively Caulked



Wickliffe Middle School –  
Wood Flooring in Worn  
Condition



Wickliffe High School –  
Water Infiltration in Locker Room

# Insights



Wickliffe Elementary Classroom



Example of a New Elementary Classroom



# Insights



Wickliffe High School Classroom



Example of an Extended Learning Area

# Insights



Wickliffe High School Cafeteria



Example of a new High School Cafeteria

# Insights



Wickliffe High School Theatre



Example of a new Auditorium



# Findings

	Wickliffe High School	Wickliffe Middle School	Wickliffe Elementary School
Original Construction	1958	1920	1923

- The school buildings are among the oldest in Lake County.
- Deficiencies in electrical, AC and plumbing systems across the buildings are not functioning properly.
- Classroom sizes are undersized compared to State standards.

# Findings

	Wickliffe High School	Wickliffe Middle School	Wickliffe Elementary School	Total
Cost to Construct New PK-12 Building				\$61,211,526.74
Cost to Renovate	\$24,362,214.65	\$16,086,005.86	\$11,542,402.34	\$51,990,622.85
Cost to Construct New	\$35,346,214.65	\$23,235,691.22	\$15,580,076.48	\$74,161,982.35

- The cost to renovate all buildings is over **\$51 million** and would still require the maintenance of 100-year old buildings in the future
  - Approximately **\$10 million** in maintenance costs will be required for roof replacements, security improvements, ADA upgrades and electrical system replacements.
- The cost to construct a new PK-12 Building is less than the cost to renovate and provides improved safety features, advanced technology and overall operational efficiencies.
- The District is eligible to receive **18% of the project cost co-funded by the state in the future.**

# Recommendation

- Construct a new, state-of-the-art PK-12 facility built on the existing High School site
- 500-seat auditorium
- Flexible classrooms with advanced technology
- Turf athletic field adjacent to the school to provide convenient access to concessions and restrooms

# Preliminary Site Fit Test





# Project Cost Summary

Construct New PK-12 Facility on HS Site:	\$ 45,026,767
Abate / Demo Wickliffe ES, MS & HS:	\$ 2,856,154
2.9% Escalation for Market Conditions	\$ 1,379,904
Additional Academic/Athletic SF	\$ 6,000,000
Relocate Baseball Field	\$ 440,000
500 seat Auditorium	\$ 4,400,000
Turf at the Stadium	\$ 1,100,000
Project Cost	\$61,202,825
District Construction Budget Funds in place	(\$1,202,826)
<b>Total Project Ballot Cost</b>	<b>\$59,999,999</b>

# Questions?

Inspiring Students to Learn, Lead and Serve